

## Basketry Storage Mount Building Guide #2: Conical Bottoms

This guide will take you through the steps necessary to create a storage mount using archival supplies for baskets with conical bottoms such as carrying baskets or water bottles. These baskets should not be stored on their sides, but need additional support to remain upright.

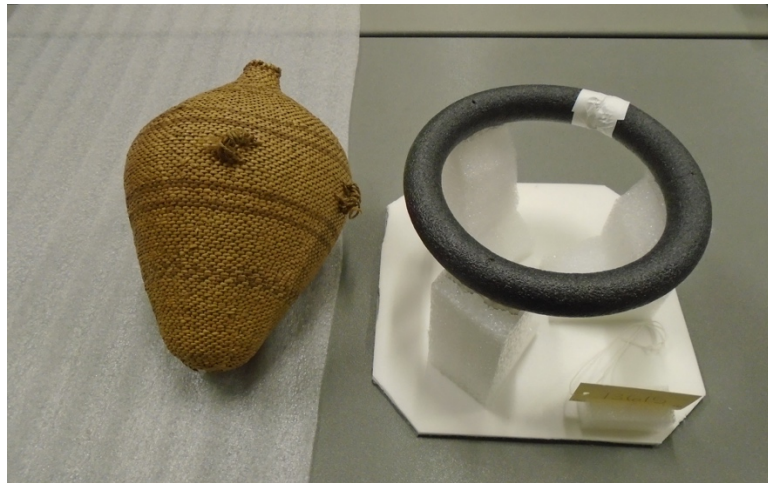
**Construction Time Estimate:** 30-40 minutes

### Archival Supplies and Tools You Will Need:

- |                      |                  |               |            |            |
|----------------------|------------------|---------------|------------|------------|
| - Corrugated Board   | - Tyvek          | - Hot Glue    | - T-Square | - Bamboo   |
| - 2" Ethafoam Planks | - Volara         | - Glue Gun(s) | - Ruler    | Skewers    |
| - 1" Backer Rod      | - Ethafoam Knife | - Box Cutter  | - Pencil   | (optional) |

**Link to the Video** (<https://youtu.be/2JtYUH-btR4>)

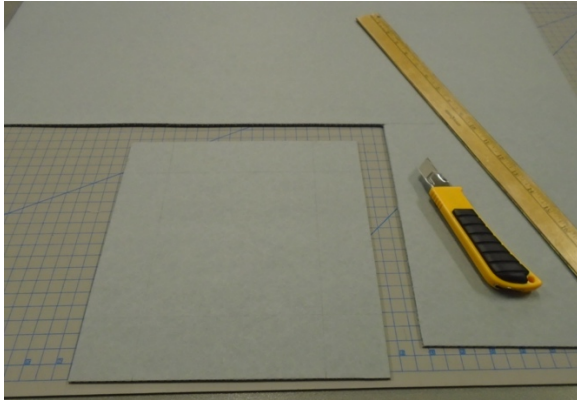
### What You Are Making:



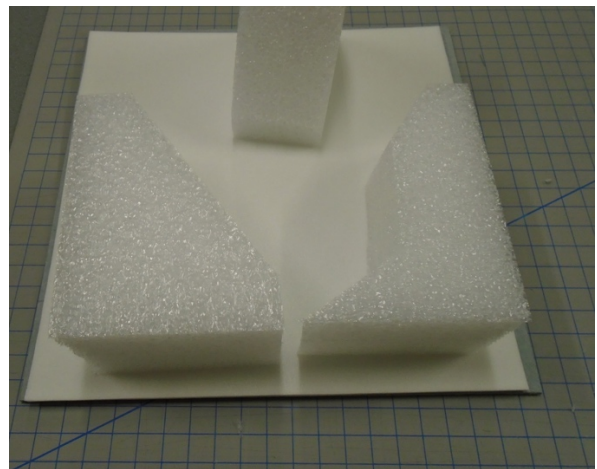
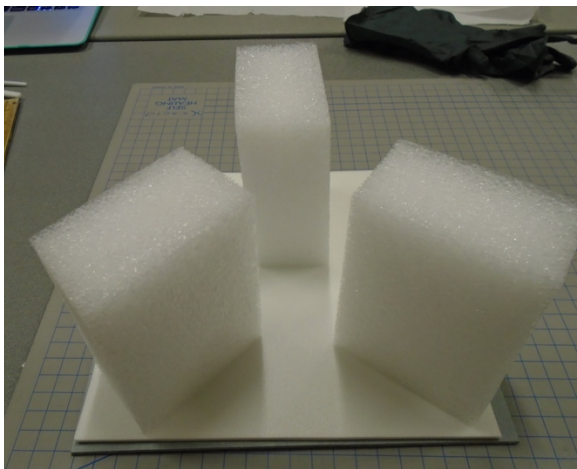
**Step 1:** Clear a large, flat workspace that will allow you to see the basket as you work but will also allow plenty of space for construction without affecting the safety of the basket.

**Step 2:** Assess the basket. Check for any weak points that may need additional support or extra careful handling. Check for any evidence of pest activity that may need mitigation. This is also the best time to get the measurements and jot them down on scrap paper. Measure the largest diameter of basket and the distance between the bottom and the point where you will want to “suspend” the basket. In this case, that is just below the handles on the sides.

**Step 3:** Using a ruler and T-square, cut a square of archival corrugated board large enough to fit the largest diameter of the basket, plus a couple inches on all sides. This will be your base.

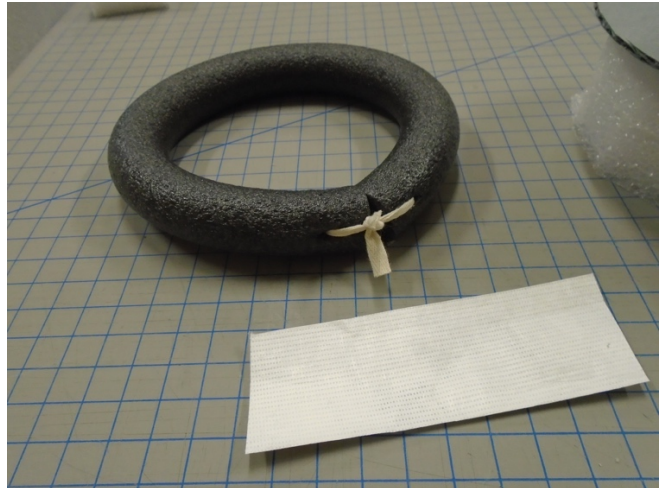


**Step 4:** Using your Ethafoam knife, cut the Ethafoam plank into a rectangular shape. The length of this rectangle will equal the distance between the bottom and the point of suspension. The width should be between 3-4 inches. Using this first plank you have cut as a template, cut out two more for a total of three (see images above and below).



**Step 5:** Begin carving these rectangles into triangles, and trimming down into a shape that will fit the shape of your basket. In this case, resembling "L" shapes. It is best to start by carving one plank piece and then using it as a template to carve the other two (see above image).

**Step 6:** Take a length of backer rod and cut down so that the diameter of the backer rod when joined together as a ring will equal the diameter of the basket at the point of suspension. Using low-melt hot glue or an awl and twill tape, connect the ends of your backer rod to form a ring. Cover this meeting point by gluing a small strip of Tyvek around the ring's ends. This will create a smoother surface that will not harm the basket.



**Step 7:** Position your three Ethafoam plank pieces to form a triangular base and move them gradually closer together until the backer rod ring will suspend atop the three planks with stability. At this point you may have to trim your planks down further at their base.



**Step 8:** Using low-melt hot glue, attach your backer rod ring to the three planks. For additional stability you can insert bamboo skewers through the ring and into the planks at the three meeting points. This is optional as bamboo skewers are non-archival (see above image).

**Step 9:** Using low-melt hot glue, attach your suspended ring and planks to the corrugated board base you cut out back at the beginning. You can attach directly to the board, or cover the board in a piece of Volara (closed-cell polyethylene foam sheet) before attaching to the center of the base. The Volara will provide a smoother surface should the basket ever come in contact with the tray, but is not required.



**Step 10:** Trim or round the corners of your tray (pointy corners around baskets are generally not a good idea). This is also a good time to attach a tiny block of Ethafoam to the edge of the tray. You can cut a slit into this block to slide in a tag for your object (see above image).

**Step 11:** Place your object on the mount you have just completed!

**A Final Tip:** Make sure to note that creating a mount to store these kinds of baskets upright may mean increasing the shelf height, or relocating the basket to a shelf with greater height. Plan ahead!

Link to the Video (<https://youtu.be/2JtYUH-btR4>)